

Escape Planning

Plan Ahead! If a fire breaks out in your home, you may have only a few minutes to get out safely once the smoke alarm sounds. Everyone needs to know what to do and where to go if there is a fire.

SAFETY TIPS

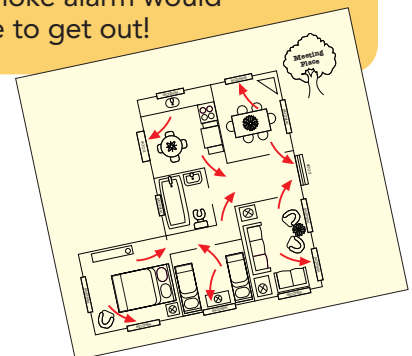
- » **MAKE** a home escape plan. Draw a map of your home showing all doors and windows. Discuss the plan with everyone in your home.
- » **KNOW** at least two ways out of every room, if possible. Make sure all doors and windows leading outside open easily.
- » **HAVE** an outside meeting place (like a tree, light pole or mailbox) a safe distance from the home where everyone should meet.
- » **PRACTICE** your home fire drill at night and during the day with everyone in your home, twice a year.
- » **PRACTICE** using different ways out.
- » **TEACH** children how to escape on their own in case you can't help them.
- » **CLOSE** doors behind you as you leave.

IF THE ALARM SOUNDS...

- » If the smoke alarm sounds, **GET OUT AND STAY OUT**. Never go back inside for people or pets.
- » If you have to escape through smoke, **GET LOW AND GO** under the smoke to your way out.
- » **CALL** the fire department from outside your home.

FACTS

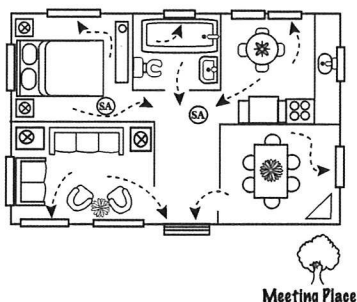
- ! According to an NFPA survey, only **one of every three** American households have actually developed and practiced a home fire escape plan.
- ! While **71%** of Americans have an escape plan in case of a fire, only **45%** of those have practiced it.
- ! **One-third** of American households who made an estimate thought they would have at least 6 minutes before a fire in their home would become life-threatening. The time available is often less. And only **8%** said their first thought on hearing a smoke alarm would be to get out!



Your Source for SAFETY Information www.nfpa.org/education
NFPA Public Education Division • 1 Batterymarch Park, Quincy, MA 02169

Home Fire Escape Plan

Use the space below to create your home fire escape plan.

This image shows a full page of blank graph paper. The grid consists of small, equal-sized squares formed by thin black lines. There are 20 columns and 20 rows of squares, creating a total of 400 square units. The paper is otherwise completely empty, with no margins, text, or other markings.

- Draw a floor plan or a map of your home. Show all doors and windows.
- Mark two ways out of each room.
- Mark all of the smoke alarms with (SA). Smoke alarms should be in each sleeping room, outside each sleeping area, and on every level of the home.
- Pick a family meeting place outside where everyone can meet.
- Remember, practice your plan at least twice a year!



Grown-ups: Children don't always awake when the smoke alarm sounds. Know what your child will do before a fire occurs. Get more information on smoke alarms and escape planning at www.nfpa.org/factsheets.